

Discharge Measurement Summary

Site name West Canal
Site number 357001
Operator(s) KEK
File name 357001_20221101_1148_42.ft
Comment

Start time	11/1/2022 11:48 AM	Sensor type	Top Setting
End time	11/1/2022 12:39 PM	Handheld serial number	FT2H2235038
Start location latitude	42.808	Probe serial number	FT2P2235028
Start location longitude	-118.869	Probe firmware	1.30
Calculations engine	FlowTracker2	Handheld software	1.7

# Stations	Avg interval (s)	Total discharge (ft³/s)
31	40	12.9218

Total width (ft)	Total area (ft²)	Wetted Perimeter (ft)
18.700	9.1300	18.761

Mean SNR (dB)	Mean depth (ft)	Mean velocity (ft/s)
21	0.488	1.4153

Mean temp (°F)	Max depth (ft)	Max velocity (ft/s)
43.177	0.810	2.0829

Discharge Uncertainty		
Category	ISO	IVE
Accuracy	1.0%	1.0%
Depth	0.3%	3.9%
Velocity	0.3%	3.9%
Width	0.1%	0.1%
Method	1.5%	
# Stations	1.7%	
Overall	2.5%	5.6%

Discharge equation	Mid Section
Discharge uncertainty	IVE
Discharge reference	Rated

Data Collection Settings	
Salinity	0.000 PSS-78
Temperature	-
Sound speed	-
Mounting correction	0.000 %

Summary overview

No changes were made to this file
Quality control warnings



Discharge Measurement Summary

Site name West Canal
Site number 357001
Operator(s) KEK
File name 357001_20221101_1148_42.ft
Comment

Station Warning Settings

Station discharge OK

Station discharge < 5.00%

Station discharge caution

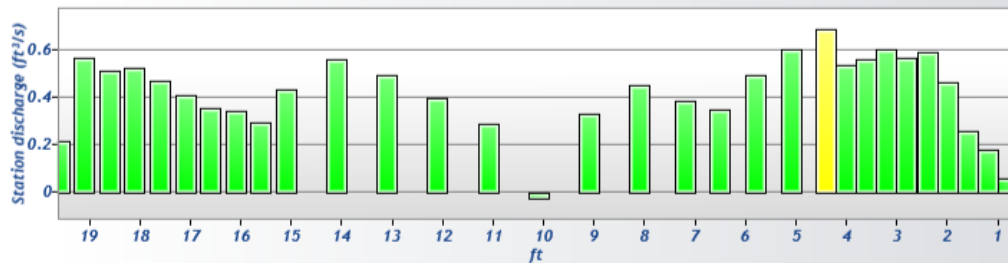
5.00% >= Station discharge < 10.00%

Station discharge warning

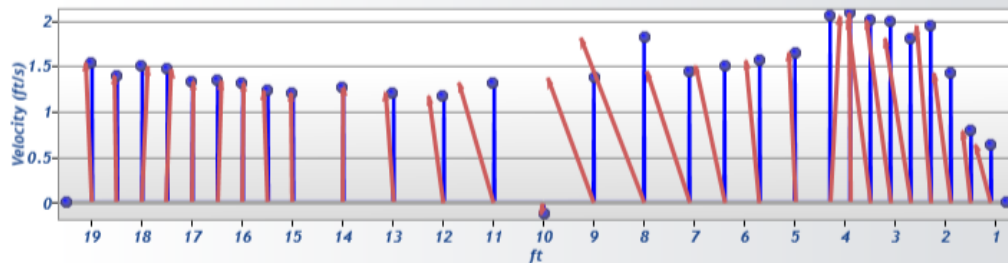
Station discharge >= 10.00%



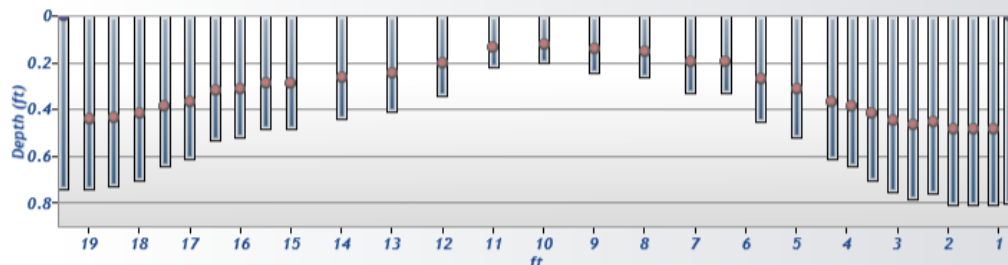
Discharge chart

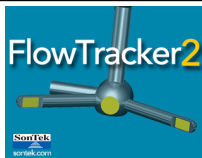


Velocity chart



Depth chart

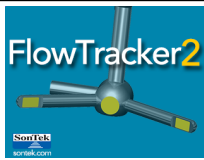




Discharge Measurement Summary

Site name West Canal
Site number 357001
Operator(s) KEK
File name 357001_20221101_1148_42.ft
Comment

Measurement results													
St#	Time	Location (ft)	Method	Depth (ft)	%Depth	Measured Depth (ft)	Samples	Velocity (ft/s)	Correction	Mean Velocity (ft/s)	Area (ft ²)	Flow (ft ³ /s)	%Q
0	11:48 AM	0.800	None	0.800	0.0000	0.000	0	0.0000	0.7500	0.4797	0.1200	0.0576	0.45 ✓
1	11:49 AM	1.100	0.6	0.810	0.6000	0.486	80	0.6396	1.0000	0.6396	0.2835	0.1813	1.40 ✓
2	11:51 AM	1.500	0.6	0.810	0.6000	0.486	80	0.7912	1.0000	0.7912	0.3240	0.2563	1.98 ✓
3	11:53 AM	1.900	0.6	0.810	0.6000	0.486	80	1.4245	1.0000	1.4245	0.3240	0.4615	3.57 ✓
4	11:54 AM	2.300	0.6	0.760	0.6000	0.456	80	1.9458	1.0000	1.9458	0.3040	0.5915	4.58 ✓
5	11:55 AM	2.700	0.6	0.780	0.6000	0.468	80	1.8068	1.0000	1.8068	0.3120	0.5637	4.36 ✓
6	11:57 AM	3.100	0.6	0.750	0.6000	0.450	80	2.0006	1.0000	2.0006	0.3000	0.6002	4.64 ✓
7	11:58 AM	3.500	0.6	0.700	0.6000	0.420	80	2.0014	1.0000	2.0014	0.2800	0.5604	4.34 ✓
8	12:00 PM	3.900	0.6	0.640	0.6000	0.384	80	2.0829	1.0000	2.0829	0.2560	0.5332	4.13 ✓
9	12:01 PM	4.300	0.6	0.610	0.6000	0.366	80	2.0486	1.0000	2.0486	0.3355	0.6873	5.32 ✓
10	12:03 PM	5.000	0.6	0.520	0.6000	0.312	80	1.6453	1.0000	1.6453	0.3640	0.5989	4.63 ✓
11	12:05 PM	5.700	0.6	0.450	0.6000	0.270	80	1.5603	1.0000	1.5603	0.3150	0.4915	3.80 ✓
12	12:06 PM	6.400	0.6	0.330	0.6000	0.198	80	1.5055	1.0000	1.5055	0.2310	0.3478	2.69 ✓
13	12:08 PM	7.100	0.6	0.330	0.6000	0.198	80	1.4455	1.0000	1.4455	0.2640	0.3816	2.95 ✓
14	12:10 PM	8.000	0.6	0.260	0.6000	0.156	80	1.8131	1.0000	1.8131	0.2470	0.4478	3.47 ✓
15	12:12 PM	9.000	0.6	0.240	0.6000	0.144	80	1.3731	1.0000	1.3731	0.2400	0.3295	2.55 ✓
16	12:13 PM	10.000	0.6	0.200	0.6000	0.120	80	-0.1234	1.0000	-0.1234	0.2000	-0.0247	-0.19 ✓
17	12:15 PM	11.000	0.6	0.220	0.6000	0.132	80	1.3203	1.0000	1.3203	0.2200	0.2905	2.25 ✓
18	12:17 PM	12.000	0.6	0.340	0.6000	0.204	80	1.1734	1.0000	1.1734	0.3400	0.3990	3.09 ✓
19	12:19 PM	13.000	0.6	0.410	0.6000	0.246	80	1.2085	1.0000	1.2085	0.4100	0.4955	3.83 ✓
20	12:21 PM	14.000	0.6	0.440	0.6000	0.264	80	1.2640	1.0000	1.2640	0.4400	0.5561	4.30 ✓
21	12:23 PM	15.000	0.6	0.480	0.6000	0.288	80	1.2045	1.0000	1.2045	0.3600	0.4336	3.36 ✓
22	12:25 PM	15.500	0.6	0.480	0.6000	0.288	80	1.2301	1.0000	1.2301	0.2400	0.2952	2.28 ✓
23	12:26 PM	16.000	0.6	0.520	0.6000	0.312	80	1.3151	1.0000	1.3151	0.2600	0.3419	2.65 ✓
24	12:28 PM	16.500	0.6	0.530	0.6000	0.318	80	1.3403	1.0000	1.3403	0.2650	0.3552	2.75 ✓
25	12:29 PM	17.000	0.6	0.610	0.6000	0.366	80	1.3305	1.0000	1.3305	0.3050	0.4058	3.14 ✓
26	12:31 PM	17.500	0.6	0.640	0.6000	0.384	80	1.4666	1.0000	1.4666	0.3200	0.4693	3.63 ✓
27	12:33 PM	18.000	0.6	0.700	0.6000	0.420	80	1.4974	1.0000	1.4974	0.3500	0.5241	4.06 ✓
28	12:34 PM	18.500	0.6	0.730	0.6000	0.438	80	1.3942	1.0000	1.3942	0.3650	0.5089	3.94 ✓
29	12:36 PM	19.000	0.6	0.740	0.6000	0.444	80	1.5353	1.0000	1.5353	0.3700	0.5681	4.40 ✓
30	12:39 PM	19.500	None	0.740	0.0000	0.000	0	0.0000	0.7500	1.1515	0.1850	0.2130	1.65 ✓

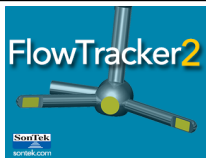


Discharge Measurement Summary

Site name West Canal
Site number 357001
Operator(s) KEK
File name 357001_20221101_1148_42.ft
Comment

Quality Control Settings	
Maximum depth change	50.00%
Maximum spacing change	100.00%
SNR threshold	10 dB
Standard error threshold	0.0328 ft/s
Spike threshold	10.00%
Maximum velocity angle	20.0 deg
Maximum tilt angle	5.0 deg

Quality control warnings							
St#	Time	Location (ft)	Method	Depth (ft)	%Depth	Measured Depth (ft)	Warnings
1	11:49 AM	1.100	0.6	0.810	0.6000	0.486	Velocity Angle > QC
3	11:53 AM	1.900	0.6	0.810	0.6000	0.486	Standard Error > QC
12	12:06 PM	6.400	0.6	0.330	0.6000	0.198	Standard Error > QC,Velocity Angle > QC
13	12:08 PM	7.100	0.6	0.330	0.6000	0.198	Standard Error > QC,Velocity Angle > QC
14	12:10 PM	8.000	0.6	0.260	0.6000	0.156	Velocity Angle > QC
15	12:12 PM	9.000	0.6	0.240	0.6000	0.144	Velocity Angle > QC
16	12:13 PM	10.000	0.6	0.200	0.6000	0.120	Boundary Interference,High % Spikes,Velocity Angle > QC
17	12:15 PM	11.000	0.6	0.220	0.6000	0.132	Velocity Angle > QC
29	12:36 PM	19.000	0.6	0.740	0.6000	0.444	Boundary Interference



Discharge Measurement Summary

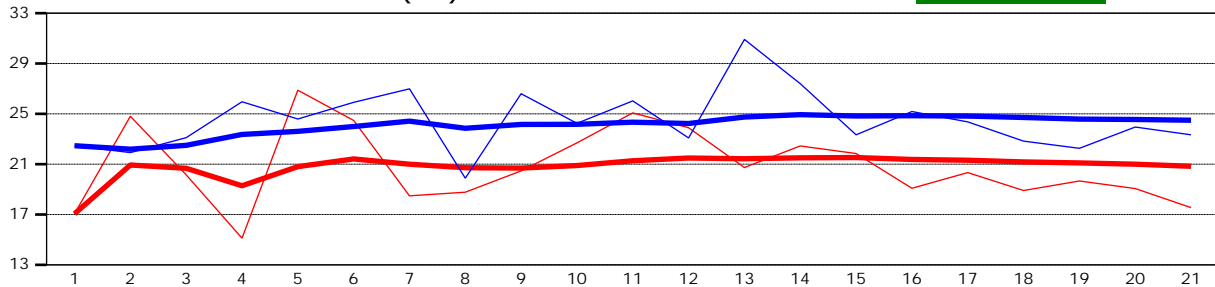
Site name West Canal
Site number 357001
Operator(s) KEK
File name 357001_20221101_1148_42.ft
Comment

Beam 1	
Beam 2	

Automated beam check Start time 11/1/2022 11:47:20 AM

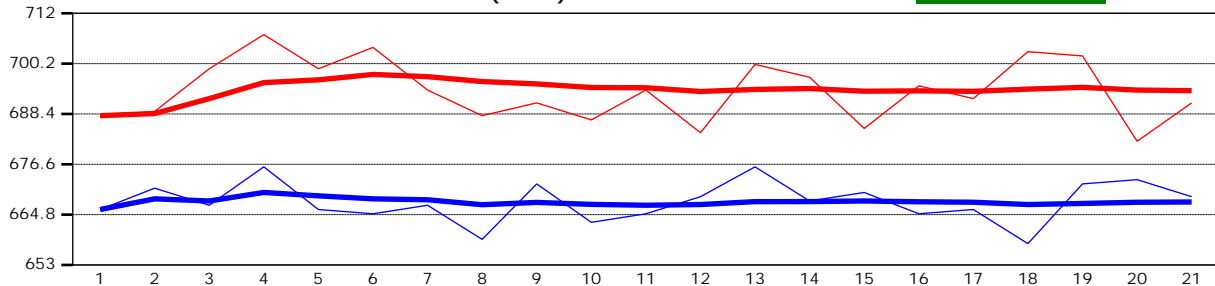
Automated beam check SNR(dB)

PASS



Automated beam check Noise level(cnts)

PASS



Automated beam check Quality control warnings

No quality control warnings



Discharge Measurement Summary

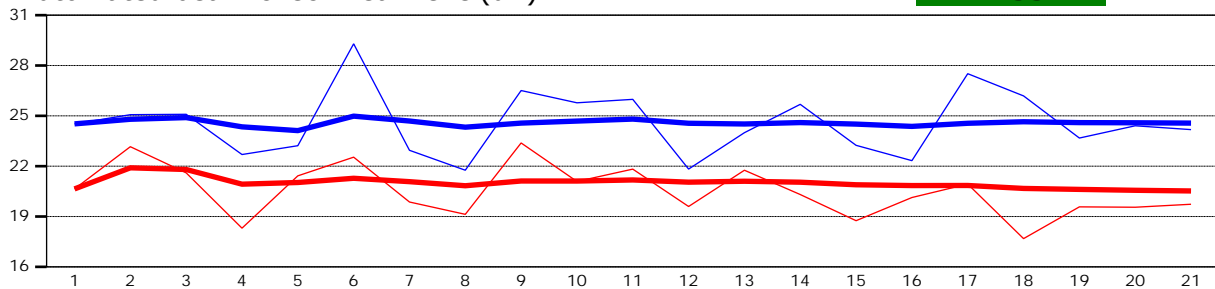
Site name West Canal
Site number 357001
Operator(s) KEK
File name 357001_20221101_1148_42.ft
Comment

Beam 1	
Beam 2	

Automated beam check Start time 11/1/2022 11:47:20 AM

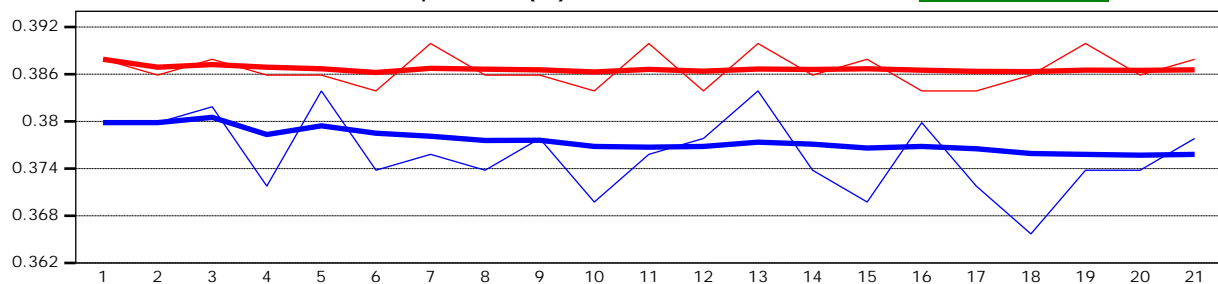
Automated beam check Peak level(dB)

PASS



Automated beam check Peak position(ft)

PASS



Automated beam check Quality control warnings

No quality control warnings